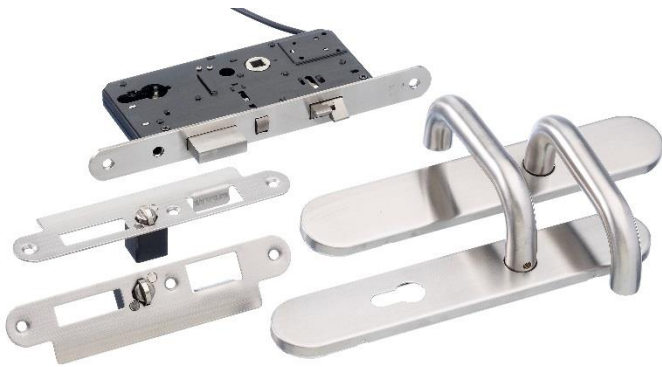


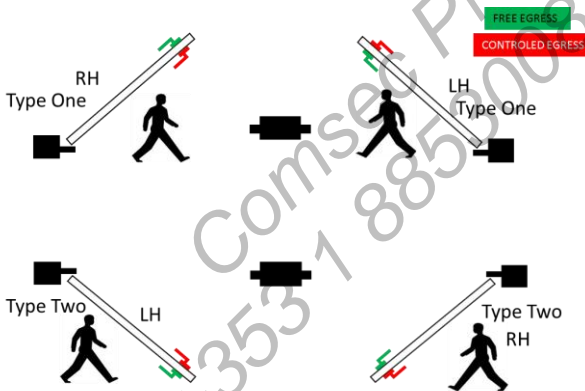
HL-555 Lever controlled electric lock



The new HL555 lever handle controlled Electric Lock gives free egress from the inside at all times whilst the outside handle is electrically controlled by a card reader or keypad, or via a key override.

Features

- Fire and EN mechanically tested
- 12 Vdc fail secure
- Cost effective solution
- Comes complete with handles, cylinder, lock-case and 2 differently handed keeper plates
- Dead-locking
- Handle control
- Lock monitoring
- Request to exit monitoring
- Key override



LH = Standing on the side of the closed door so that the hinges are visible the hinges are on the LEFT
RH = Standing on the side of the closed door so that the hinges are visible the hinges are on the RIGHT

Technical Information

- 12 Vdc
- 55mm back set
- Stainless steel
- Handed design (refer to handing diagram to choose type required)

Related Products

DG500



PSU3A-12(B)



SPDL03



EASIPROX

